

Schools Block Funding Formula Consultation

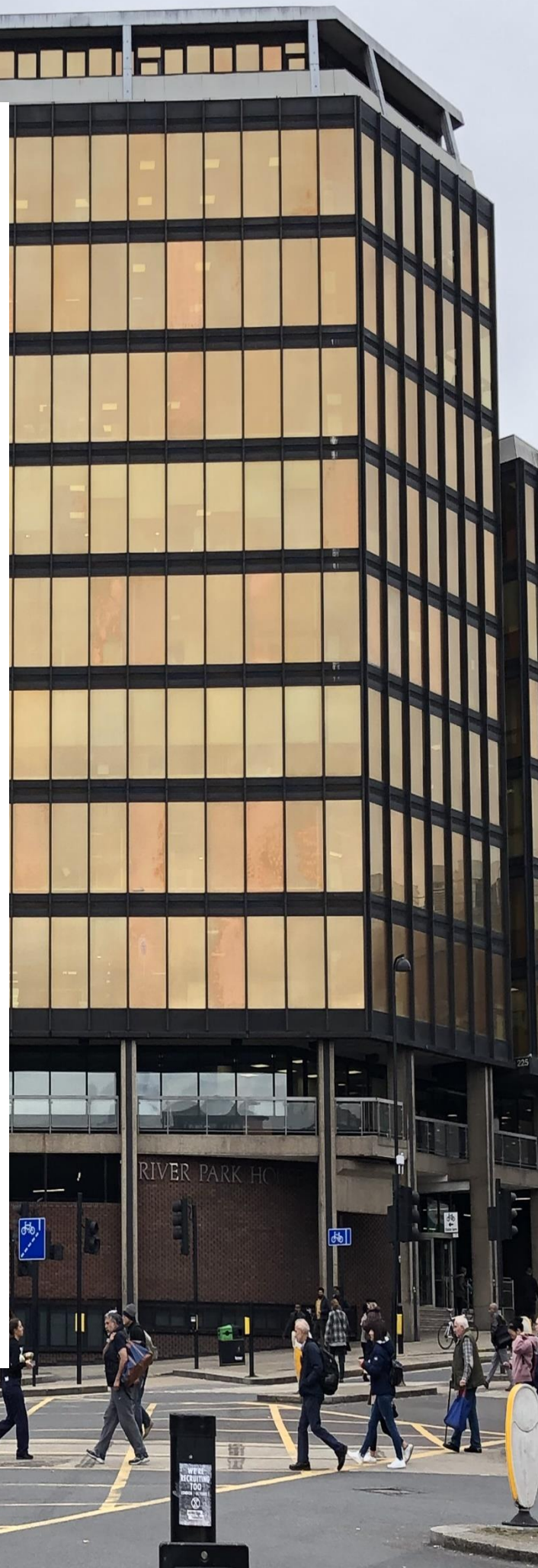
Financial Year 2024-25

Commencement Date: 24th November 2023

Deadline: 8th December 2023

Haringey
LONDON

School Finance
London Borough of Haringey



Schools Block of Dedicated School Grant (DSG) Funding Formula

Funding Consultation between Haringey School's Forum and Academies, Maintained Primary and Secondary Schools

Contents

NO	DESCRIPTION	PAGE NO
1.	INTRODUCTION	3
2.	NATIONAL CHANGES IN FUNDING LEVEL FOR 2024-25	4-5
3.	PROPOSED FUNDING MODELS	6-8
4.	CONSULTATION QUESTIONNAIRE	9
5.	SCHOOLS VOTING RIGHTS	9
6.	CONSULTATION DEADLINE	10

Contact us:
s-SchoolsReturns@haringey.gov.uk

1. INTRODUCTION

The local authority is required under regulation 9 of The School and Early Years Finance (England) Regulations 2023 to consult their Schools' Forum, maintained schools and academies about any proposed changes to the schools' formula in relation to the factors and criteria taken into account, and the methods, principles and rules adopted.

This document forms the basis for this consultation with all Haringey schools and the Haringey School's Forum to seek views on the proposed changes to the schools funding formula in 2024-25. The consultation also considers the strategic oversight of existing challenges within high needs block funding.

All schools are encouraged to respond to this consultation using the [online survey](#)

The deadline for responding to the consultation is **8th December 2023**

While it remains the Government's intention that a school's budget should be set on the basis of a single national formula, referred to as the National Funding Formula (NFF), in 2024-25, local authorities will continue to be allowed to use either the NFF formula values or locally agreed values within the allowable NFF range to determine funding allocations for schools. The National Funding Formula sets notional allocations for schools. These allocations are then aggregated and used to calculate the total Schools Block received by each local authority with the autumn school census as the main driver for school funding allocations.

The details of indicative national funding formulae (NFF) for schools and high needs for 2024-25 was published by the Department of Education (DfE) in July 2023 and republished again in October 2023 due to an error on pupil forecasts by the DfE. Details republished is on the following [link](#)

As part of the transition to the NFF local authorities are required to bring their local formula factors 10% closer to the NFF (as adjusted for area cost adjustments (ACA) where relevant).

2. NATIONAL CHANGES IN FUNDING LEVEL FOR 2024-25

The basic structure of the schools National Funding Formula (NFF) is not changing significantly in 2024-25. There are a few minor changes in existing factors of the formula in 2024-25.

Key features to the local funding formulae

- Local authorities will continue to set a Minimum Funding Guarantee (MFG) in local formulae, which in 2024-25 must be between +0% and +0.5%. A disapplication will be required for setting a MFG outside the +0% and + 0.5% range.
- Local authorities will again be able to transfer up to 0.5% of their total school's block allocations to other blocks of the Dedicated Schools Grant (DSG), with school's forum approval. A disapplication request to the Secretary of State (SoS) will continue to be required for transfers above 0.5%, or for any amount without school's forum approval.
- DfE will calculate the actual value of DSG funding allocation for all local authorities and the schools' block will be calculated using these factor values using October 2023 census data when available.
- Split site funding is now based upon a formulaic approach and continues only to be applicable to mainstream schools. This ensures that split site funding will be provided on a consistent and fare basis across the country.
- Growth and Falling rolls funding is now built into the formula, with calculations linked to the local authority's school capacity survey (SCAP) data. The Authority Proforma Tool (APT) will now address changes within the formula.

Table 1: shows the comparison of October 2023 pupil data with October 2022 data. Please note that census data for academies may or may not reflect the correct pupil numbers which is due to extended submission deadline for census return.

Table 1: Indicative changes in pupil numbers from October 2022 to October 2023

Pupil Numbers Analysis	Oct-22	Oct-23	Change
Pupil Number Count – DSG Schools Block	32,843	32,431	-412
Primary	19,398	19,139	-259
Secondary	13,445	13,292	-153

Table 2: shows the estimated value of 2024-25 Schools Block funding allocation based on October 2023 census data to be confirmed by the DfE. This shows a decrease in funding of £1.4m due to increase in per-pupil funded rates; the rolled in 2023-24 Mainstream School Additional Grant (MSAG), and after an estimated drop of 412 pupils.

Table 2: Estimated Schools Block allocations for 2023-24 and 2024-25

Revised DSG Allocation Summary (Estimated)	FY 2023-24 (£)	Estimated FY 2024-25 (£)	Total change in Cash terms (£)
Expected DSG Allocation based on Oct 23 Census	226,351,859	224,974,128.52	-1,377,730.71

Warning: These figures are subject to change and can go up or down once DfE announces the final Schools Block DSG allocation in December 2023.

The outcomes of the consultation will inform Schools Forum at its scheduled meeting on 11th January 2024 where a decision will be made on the agreed Haringey schools' formula for 2024-25.

3. PROPOSED FUNDING MODELS

Schools Block Working Group (SBWG) met four times and reviewed various funding formula models and recommended the following two models for schools' consultation. Both models include the High Needs Block (HNB) transfer of 0.5% agreed previously on 13th October 2022. Schools Forum will have to be agree again for budget setting 2024-25 formula after taking into account the consultation responses at School Forum meeting 11th January 2024.

The SBWG considered adopting the NFF 100% as required by the DfE operational guidance. Adopting the NFF values by 100% would adopt the journey towards the hard NFF and avoid turbulence in school funding once this is fully implemented as directed by the DfE. The SBWG decided to consult only on two models, 100% NFF and variation of AWPU values in support of primary schools:

- **Model 1:**
 - a. DSG formula factors 100% to NFF values
 - b. HNB transfer of 0.5%
 - c. MFG set to 0.38%
 - d. Capping set at 50%

- **Model 2:**
 - a. DSG mixture of formula factors 100% to NFF values (as per Model 1) except for AWPU (age weighted pupil unit) for primary factor set to maximum rate permissible (due to falling rolls/primary: secondary funding ratio difference) and minimum rate for AWPU secondary factor permissible.
 - b. HNB transfer of 0.5%
 - c. MFG set to 0.29%
 - d. Capping set at 50%

Indicative allocation based on Model 1 has been shared with the consultation document for comparison with 2023-24 allocation figures and are for illustrative purposes only. Please note that values for 2024-25 are **indicative only** and will be subject to change once the final Dedicated Schools Grant allocation for 2024-25 has been published usually late December 2023 and final autumn census.

Proposed allocations applicable to all models

The table 3 below shows the proposed allocations applicable to all models:

Table 3: Proposed allocations from the Schools Block DSG

Allocation type	Schools Affected	Description	Proposed Amount (£)
Top Slice	All Schools	Growth Fund allocation	300,000
De-Delegation	Maintained	Trade Union Facility	210,147
Block Transfer	All Schools	Block transfer to CSSB for Education Welfare	*122,000
Block Transfer	All Schools	Block Transfer to EY for Nursery split site funding	*60,000
Block Transfer	All Schools	HNB transfer at 0.5%	1,140,135

*Block transfers subject to disapplication request and Secretary of State approval

Growth funding: All Schools: to set growth fund allocation at **£300K** based on current projection for potential growth in schools. This amount is set the same as last year and will be allocated within the Authority Proforma Tool (APT) in accordance with the changes for 2024-25 school formula.

Trade Union Facility: Maintained schools only: maintained schools' budgets to reflect de-delegation amounts to cover trade union duties. The allocation for the financial year 2024-25 will be set at **£210K** to cover the agreed claims experienced in 2023-24 and projected 2024-25. This amount was **£165k** in 2023-24. Any unused amount will be ring fenced for the schools block.

Education Welfare Charge: All Schools: block transfer of **£122k** to Central School Services Block (CSSB). This is the same amount as last year.

Split Site funding: All Schools: block transfer to Early Years block for nursery Split site funding of **£60K** for one Nursery School to be continued for 2024-25. This is the same as 2023-24.

High Needs Block: All Schools: block transfer (0.5%) to High Needs Block in support of SEND growth and as part of the Safety Valve Program. Estimated **£1.140m** (0.5%) and 2023-24 was **£1.098m** (0.5%).

Appendix 1: presents a comparison between the expected school draft allocation using October 2023 Census data against actual allocation schools received in 2023-24.

The spreadsheet has the following tabs:

1) **Reconciliation**:

This shows the 'big picture' overview of the whole of the Schools Block (SB) of the DSG and overall changes in pupil numbers.

2) **Summary**:

This shows the summary funding each school would receive under Model1 and Model 2 compared to the 2023-24 allocations.

3) **Model 1**: 0.5% HNB Block Transfer plus Funding factors 100% to NFF values with MFG maximized between +0% +0.5%

4) **Model 2**: 0.5% HNB Block Transfer plus Funding factors 100% to NFF values, apart from AWPU factor (primary) set at maximum permissible and secondary AWPU set at minimum permissible, with MFG set between +0%+0.5%

4. Consultation QUESTIONNAIRE

Feedback questionnaire for Haringey School Funding Formula 2024-25		
<p>Question 1: Please indicate your preferred option for Haringey’s funding model 2024-25</p> <ul style="list-style-type: none"> Model 1: Replicating NFF model <p>OR</p> <ul style="list-style-type: none"> Model 2: Replicating NFF model with AWPU variations. 	Model 1	
	OR	
	Model 2	
<p>Question 2: To support Growth Funding budget of £300k <i>(Yes or No)</i></p>	Yes	No
<p>Question 3: To support Block Transfer of £122k for Education Welfare <i>(Yes or No)</i></p>	Yes	No
<p>Question 4: To support Early Years Block Transfer for Nursery Split Site funding of £60K <i>(Yes or No)</i></p>	Yes	No
<p>Question 5: MAINTAINED SCHOOLS ONLY To support de-delegated budget from maintained schools for Trade Union Facilities time of £210K <i>(Yes or No)</i></p>	Yes	No
<p>Question 6: To support High Needs Block Transfer of £1.140m <i>(as part of Safety Valve Program - year 2)</i> <i>(Yes or No)</i></p>	Yes	No
<p>Question 7: Any further comments you would like to make with regards to the consultation.</p>	Any further comments	
<p><i>Thank you for taking the time to provide your feedback.</i></p>		

5. SCHOOLS VOTING RIGHTS

Each school will have two votes:

1. Headteacher
2. School Governor (Chair of Governor or Chair of Resources Committee)

6. CONSULTATION DEADLINE

All schools are encouraged to respond to this consultation using the [online survey](#)

Web Link: <https://forms.office.com/e/Bw3eN6xjCr>

Commencement Date: **24th November 2023**

Deadline: **8th December 2023** at 5:00pm